

Garoupe (B42)

MAIN FLOOR

TOTAL INTERNAL AREA 187.16m²

ENTRANCE 6.37m²

LIVING 50.70m²

KITCHEN 15.45m²

MASTER SUITE 28.58m²

MASTER BATHROOM 10.05m²

BEDROOM 2 14.93m²

BATHROOM 2 6.15m²

BEDROOM 3 17.78m²

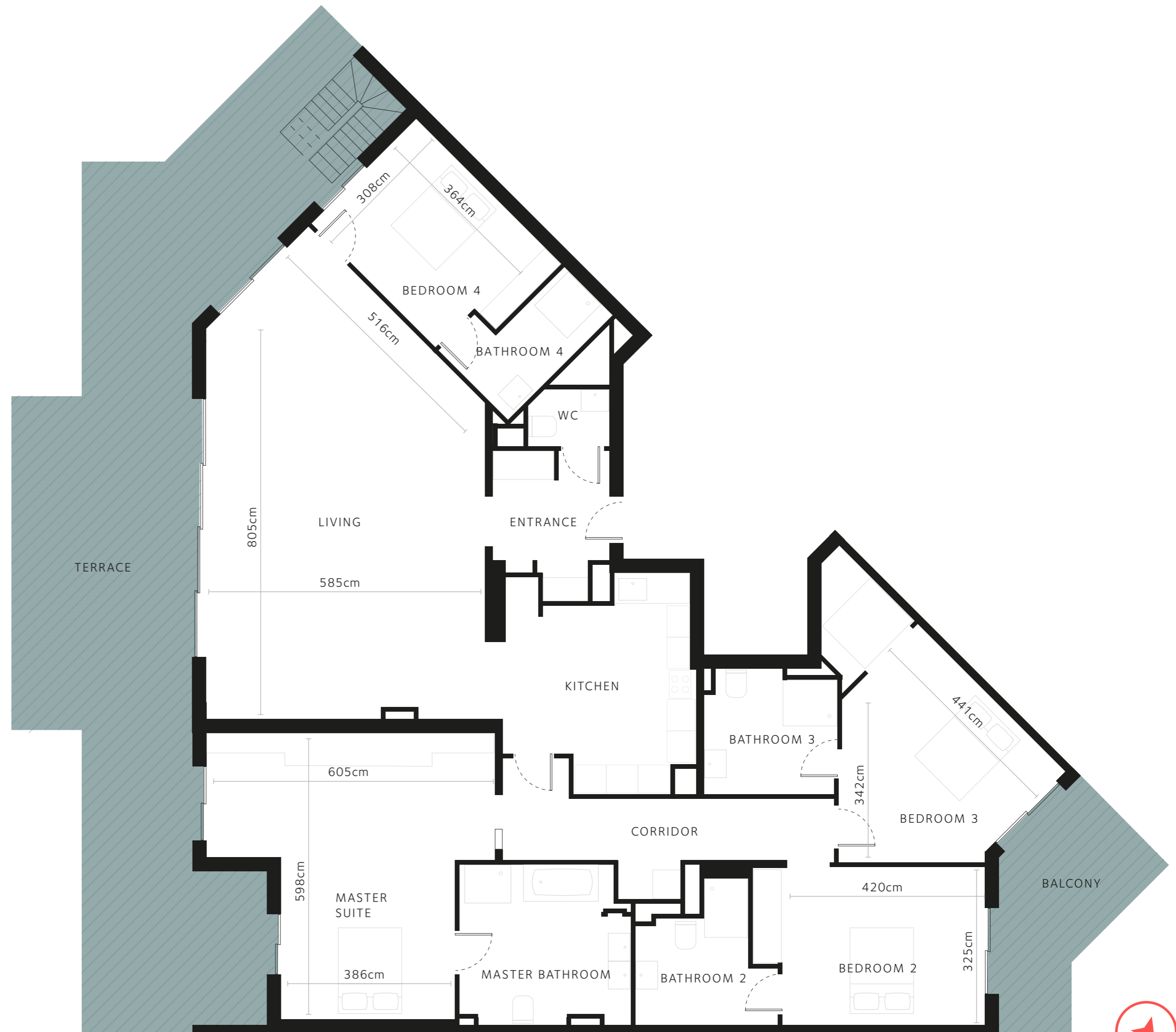
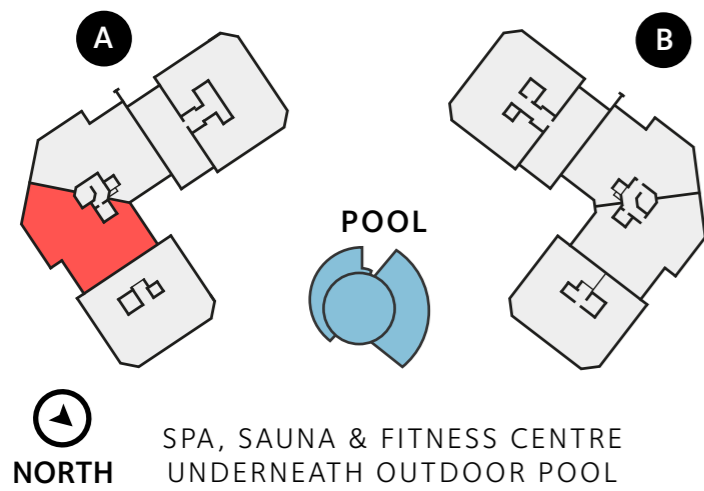
BATHROOM 3 6.90m²

BEDROOM 4 12.35m²

BATHROOM 4 4.60m²

BALCONY 9.50m²

TERRACE 59.00m²



Garoupe (B42)

ROOF TERRACE

ROOF TERRACE 162.60m²

SWIMMING POOL 21.20m²

